

## How to use:

To learn more about each PIN billing phase, select a header from the left sidebar below.

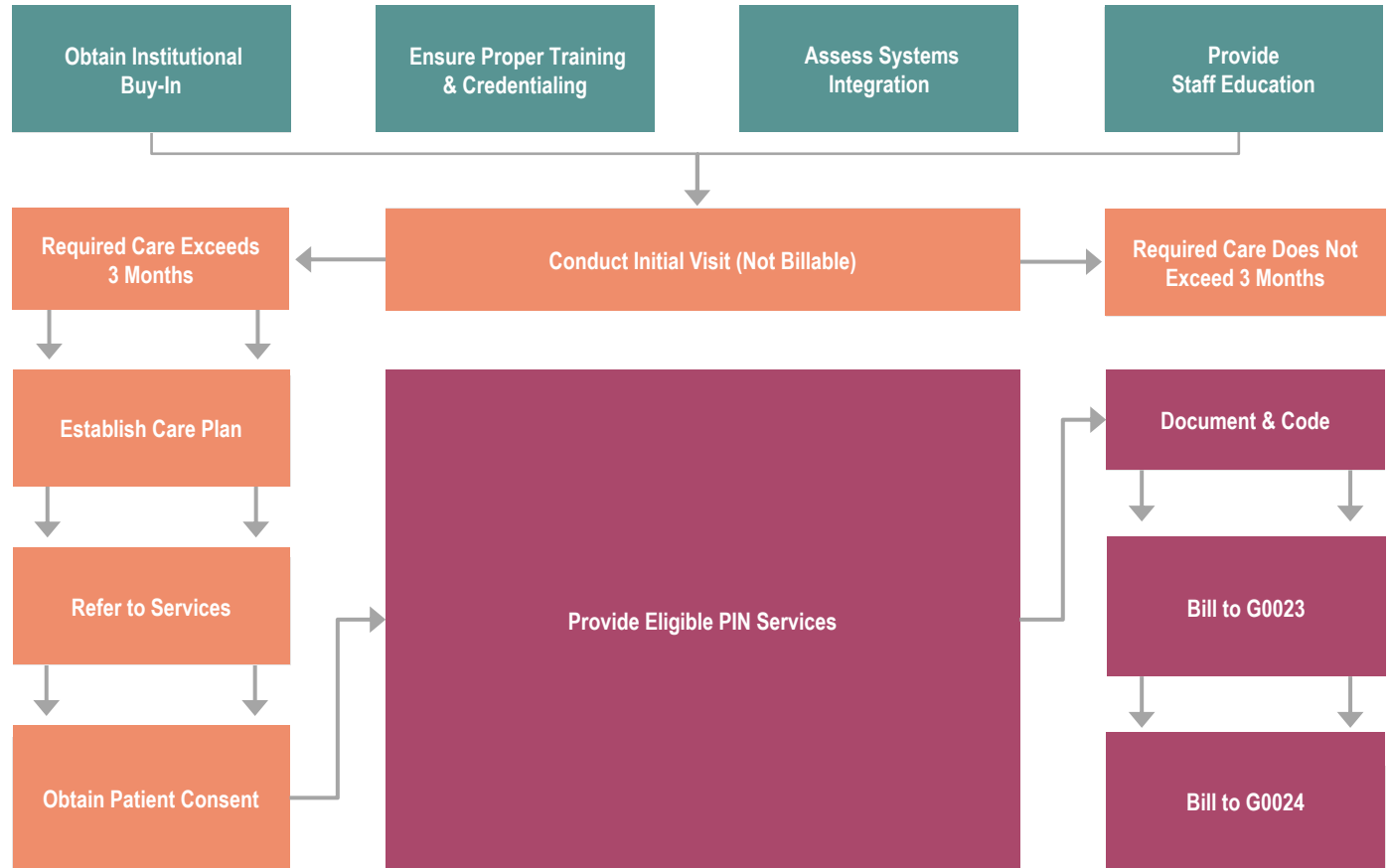
Pre-billing  
Readiness

Eligibility

Billing  
Implementation

PIN Code  
Resources

## Navigating Principal Illness Navigation Services (PIN)



## How to use:

To learn more about each PIN billing phase, select a header from the left sidebar below.

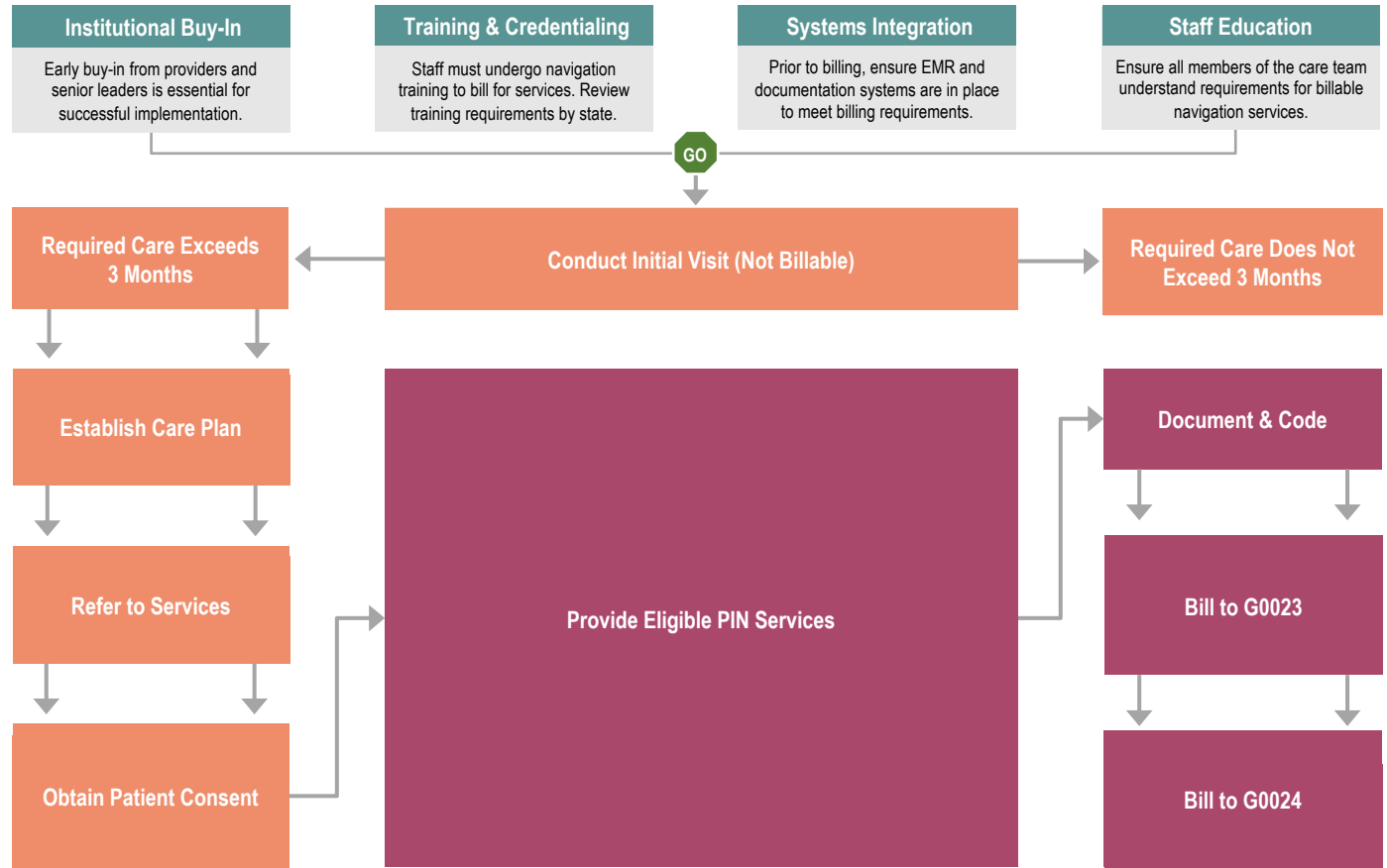
Pre-billing  
Readiness

Eligibility

Billing  
Implementation

PIN Code  
Resources

## Navigating Principal Illness Navigation Services (PIN)



## How to use:

To learn more about each PIN billing phase, select a header from the left sidebar below.

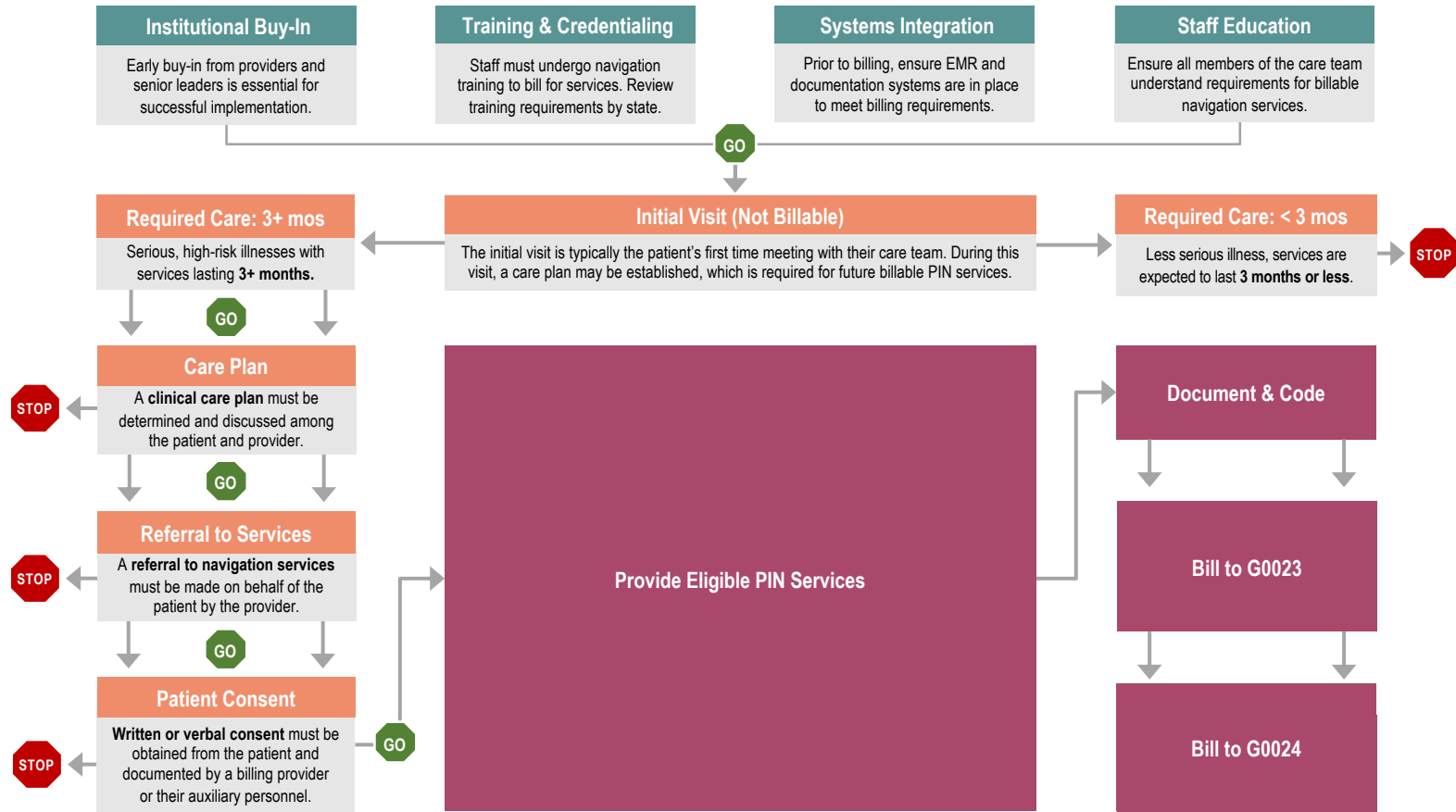
Pre-billing Readiness

Eligibility

Billing Implementation

PIN Code Resources

# Navigating Principal Illness Navigation Services (PIN)



# How to use:

To learn more about each PIN billing phase, select a header from the left sidebar below.

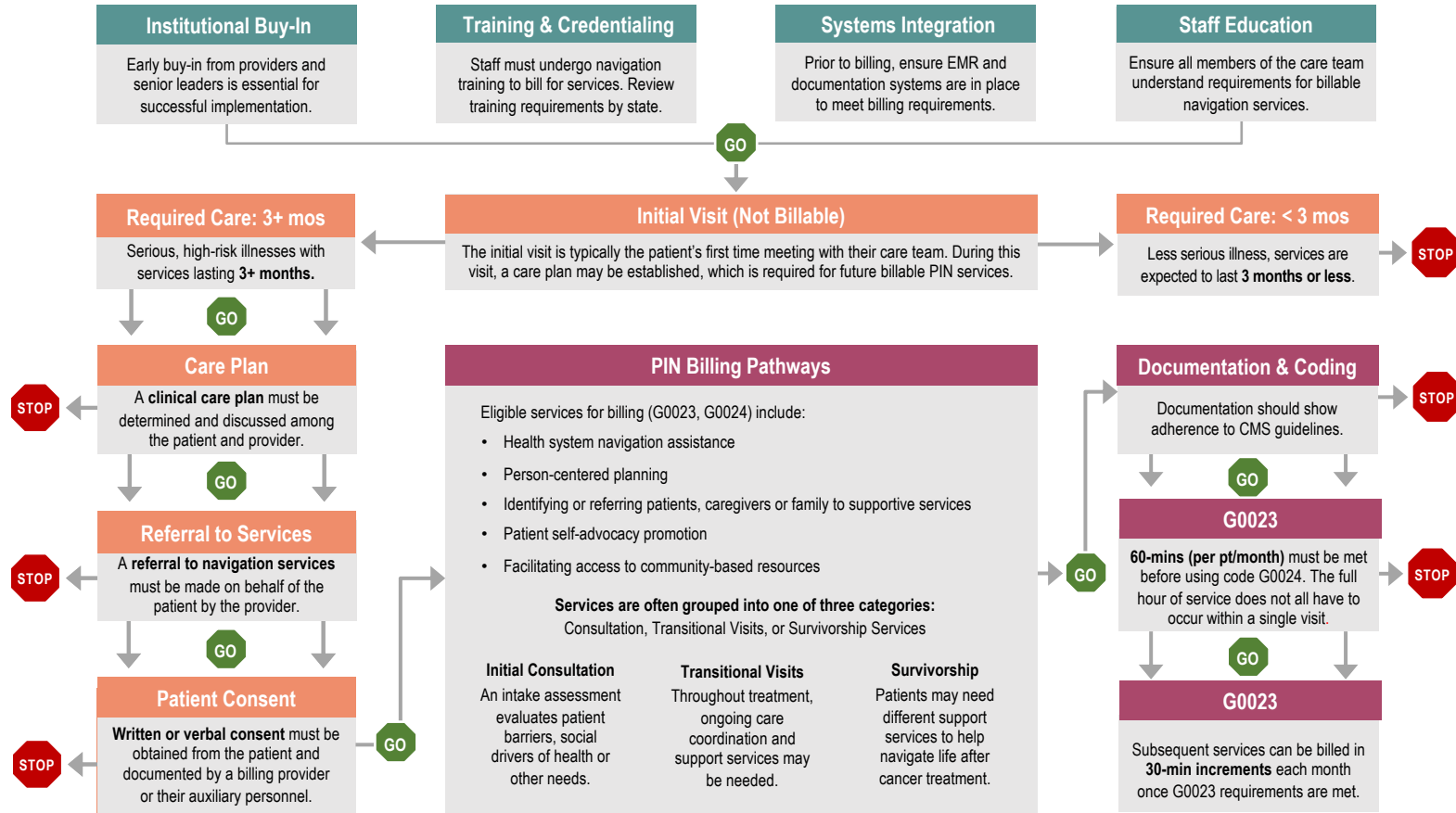
Pre-billing Readiness

Eligibility

Billing Implementation

PIN Code Resources

# Navigating Principal Illness Navigation Services (PIN)



# Navigating Principal Illness Navigation Services (PIN)

## How to use:

To learn more about each PIN billing phase, select a header from the left sidebar below.

### Pre-billing Readiness

### Eligibility

### Billing Implementation

### PIN Code Resources

#### Pre-billing Readiness

- [CMS Payment for Principal Illness Navigation: How Do I Credential My Navigators?](#) (JONS)
- [State-Based Requirements for CHWs](#) (ASTHO)
- [Guide to Certification Preparation OPN-CG](#) (AONN+)

#### Eligibility

- [Care Management Services and Patient Navigation Services: A Comparison](#) (ASCO)
- [Health-Related Social Needs FAQ](#) (CMS)
- [Breaking Down Principal Illness Navigation Services](#) (ACCC)

#### Billing Implementation

- [CPT Assistant for CPT Coding Guidance](#) (AMA)
- [Patient Navigation Barriers and Outcomes Tool](#) (GW Cancer Center)
- [Implementing the New Reimbursement Codes Webinar Series](#) (ACCC)

